



## TASE500 HD

# ADVANCED, MULTISPECTRAL IMAGING SYSTEM

### HD IMAGING PERFORMANCE

- HD solution for improved image quality and clarity
- Full digital imaging enables advanced post processing and third party exploitation tools and no compression artifacts
- Fourth Generation HD-MWIR imager for superior IR imaging at long ranges, including local area processing and noise reduction filter
- Precision optics for maximum image sharpness and clarity

### MARKET LEADING SWaP & VALUE

- Lightest payload in its class
- Lowest cost with fully integrated features for best value

### INTEGRATED SOLUTION

- Viewpoint user interface for improved operator efficiency
- Touchscreen, tablet, airborne downlink video display options available



HD-MWIR

HD-E0

HD-SPOTTER

- Ruggedized hand controller (optional)
- Configurable software to suit mission needs
- Single LRU with onboard GPS/INS for simple integration and installation
- Laser Illuminator option
- Continuous zoom for improved situational awareness, plus Picture-in-Picture supported.



**DAYLIGHT CAMERA**

High Definition (HD) 720p  
 Continuous Optical Zoom 13x  
 Continuous Digital Zoom: 4x  
 HFOV (HD) 30.0° -2.3°  
 Wavelength: 400 to 700 nm  
 (night mode 850 nm)

**DAYLIGHT SPOTTER**

High Definition (HD) 720p  
 Fixed Spotter Lens  
 HFOV: 0.9°

**MWIR (MID-WAVE INFRARED) CAMERA**

High Definition (HD) 720p  
 Continuous Optical Zoom: 6.3x  
 Continuous Digital Zoom: 4x  
 HFOV (HD) 17.0° - 3.0°  
 Wavelength: 3 to 5  $\mu\text{m}$

**LASER POINTER<sup>1</sup> (OPTIONAL)**

Class IIIb laser<sup>1</sup>  
 830 nm (NVG band), 130 mW max

**PAYLOAD PERFORMANCE**

Field of Regard: 360° Pan, +20° to -85° Tilt  
 4-Axis active stabilization  
 3-Axis passive vibration isolation (optional)  
 Envelope 150 KIAS, 0-15,000 ft.

**DATA & CONTROL INTERFACE**

RS-232, CAN, Ethernet

**ELECTRICAL**

Vin: 18 - 30 Volts (MIL-STD-704F)  
 Power: 95W (average) 125W (max)  
 AS6129 compliant

**MECHANICAL**

360° Continuous pan  
 +20° to -85° Tilt  
 Diameter: 10.25 inches (260.35 mm)  
 Height: 14.75 inches (374.65 mm)  
 Unmanned weight: 33 lbs. (15 kg)  
 Manned weight: 37 lbs. (17 kg)  
 AS6169 compliant

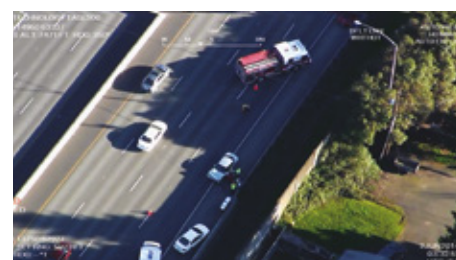
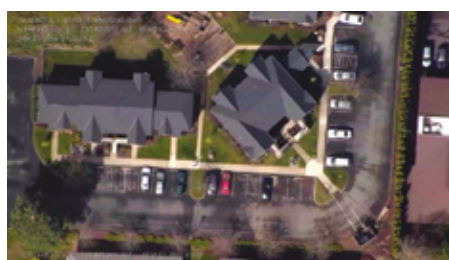
**ENVIRONMENTAL**

Designed to MIL-STD-810G, 461F, 704F  
 Operating temperature: -20°C to +50°C

**VIDEO OUT:**

Digital video: SMPTE 292  
 (HD-SDI), H.264

Metadata MISB compatible  
 STD0601, STD0902.1 & STD9716, STANAG  
 4609, SMPTE 291M/RP214



Specifications subject to change without notice.



Collins Aerospace

+1.541.387.2120

collinsaerospace.com/tase