

VPS Field Programming Guide

This document describes the process of field programming and loading a license key into a VPS. It covers all VPS platforms (dPict VPS, VPS-2 and VPS-LT).

! Programming a VPS in the field (with the VPS field programmer application) is only possible through a gimbal. Programming a standalone VPS is not supported at this time.

1. User Interface Description

The VPS Field Programmer UI is divided into the following four sections:

File: The user can select a firmware file or a license key file. Firmware files have a suffix of **.ais** or **.out**, and are included in the released installation of ViewPoint. License files have an **.xml** suffix and are individually created per VPS copy.



Figure 1 - File

Programming Details: Displays the selector for the communications port the gimbal is connected to. The **Program** button is used to load a firmware file or a license key file. The bottom section includes a programming progress display.

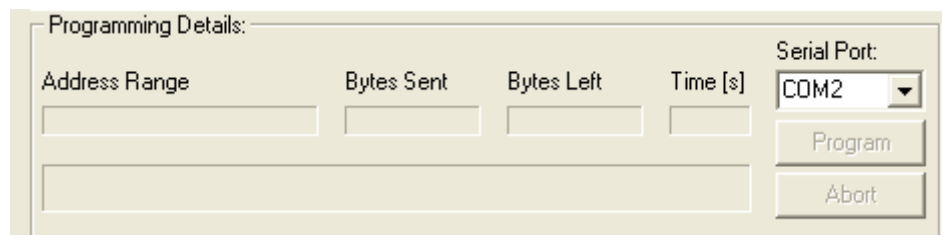


Figure 2 - Programming Details

VPS Information: Clicking the **Request** button sends a request for information to the VPS through the connected gimbal. The request has two elements: A request for the currently installed VPS firmware version, and a request for the VPS’s internal board serial number and licensed functions. Each request has a three second timeout and a status string will show if they were acknowledged in time by the VPS.

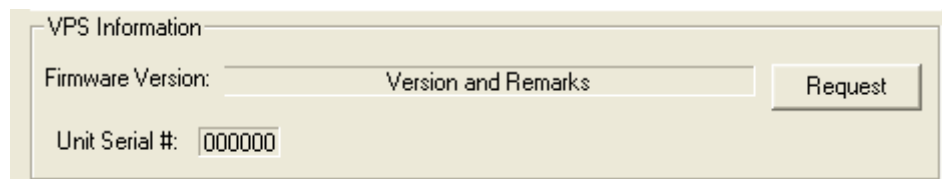


Figure 3 - VPS Information

VPS Key Functionality: This is a read-only section and cannot be modified. It includes the information within a license key, whether it is currently installed in memory on a VPS or loaded

locally from a key file. The information includes the board serial number, firmware version for the current license, and the actual features. Features not enabled in the key are grayed-out.



Figure 4 - VPS Key Functionality

2. Programming the VPS with a Firmware File

1. Click the **Firmware File...** button under the File section of the UI. Navigate to the firmware file you wish to load.



Note: dPict firmware files end with an .out suffix. VPS-2 or VPS-LT firmware files end with an .ais suffix.

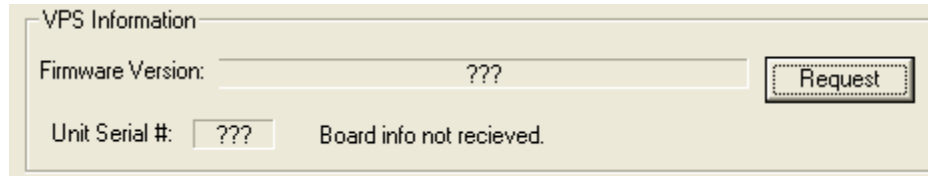
2. Make sure that the VPS is connected to a gimbal (if the gimbal has an internal VPS, it is already connected). Ensure that the gimbal is connected to the PC.
3. Set the serial port to the correct PC communications port.
4. Click **Program** and follow the instructions.

3. Determining the VPS Licensed Features

This section explains how to determine the current licensed features for your VPS.

1. Make sure that the VPS is connected to a gimbal (if the gimbal has an internal VPS, it is already connected). Ensure that the gimbal is connected to the PC.
2. Set the serial port to the correct PC communications port.

- Click the **Request** button. Wait for the features in the VPS Key Functionality section to populate. If communications between the UI and the gimbal are not established, you will receive an error message in the VPS Information section shown in **Figure 5**.



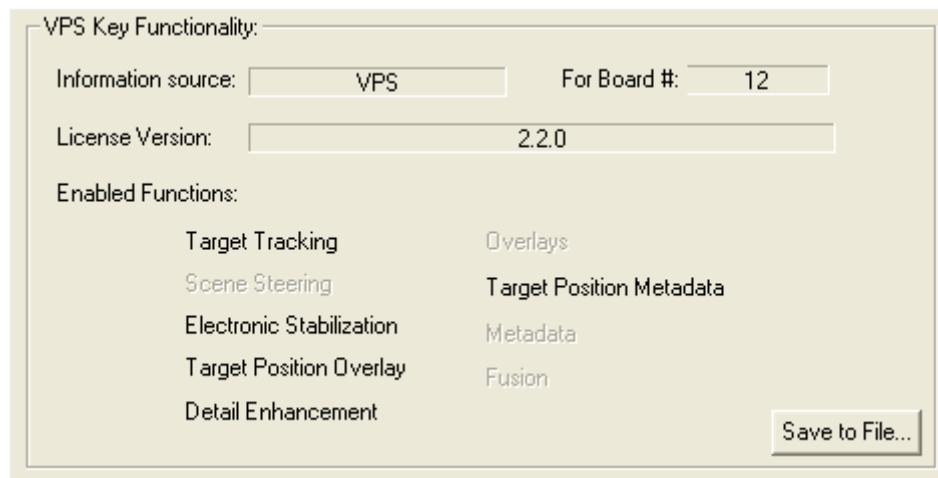
VPS Information

Firmware Version:

Unit Serial #: Board info not recieved.

Figure 5 - VPS Communications Error

- The non-grayed-out features are licensed on the VPS. In this example the source of the information is shown to be a VPS with serial # 12.



VPS Key Functionality:

Information source: For Board #:

License Version:

Enabled Functions:

Target Tracking	Overlays
Scene Steering	Target Position Metadata
Electronic Stabilization	Metadata
Target Position Overlay	Fusion
Detail Enhancement	

Figure 6 - VPS License Features

- The information in the functionality section (if obtained from the VPS) can be saved to an .xml file for sending to CCT. This may be required for upgrading existing licenses. To do this, click the Save to File button in the lower right corner.

4. Loading a License Key

1. Click the **Request** button to request the information from the VPS.
2. Click the **License File...** button. Navigate to the license file you wish to load using the Open file dialog window:

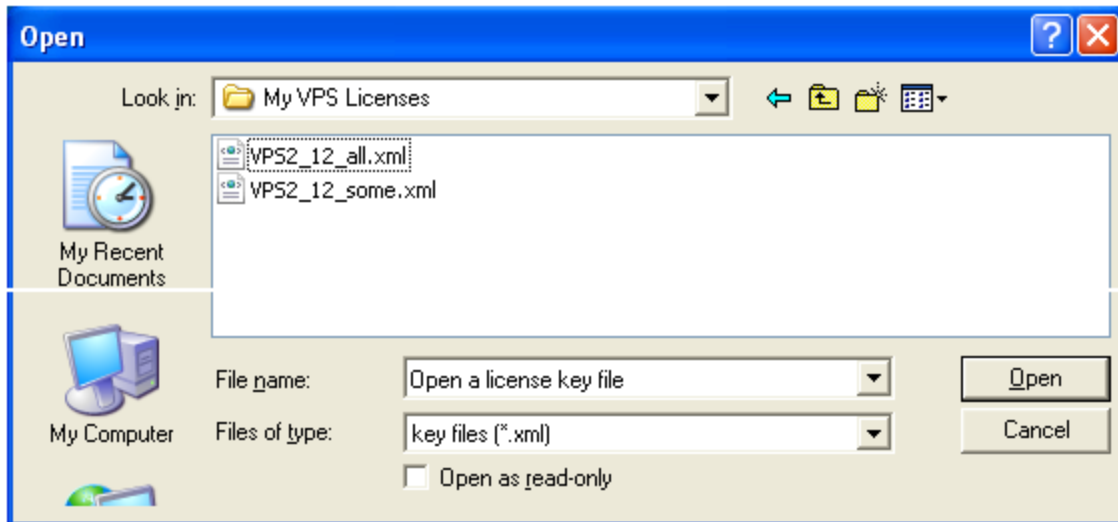


Figure 7 - Loading a License Key

3. Click the **Open** button. The license file loads into the UI.

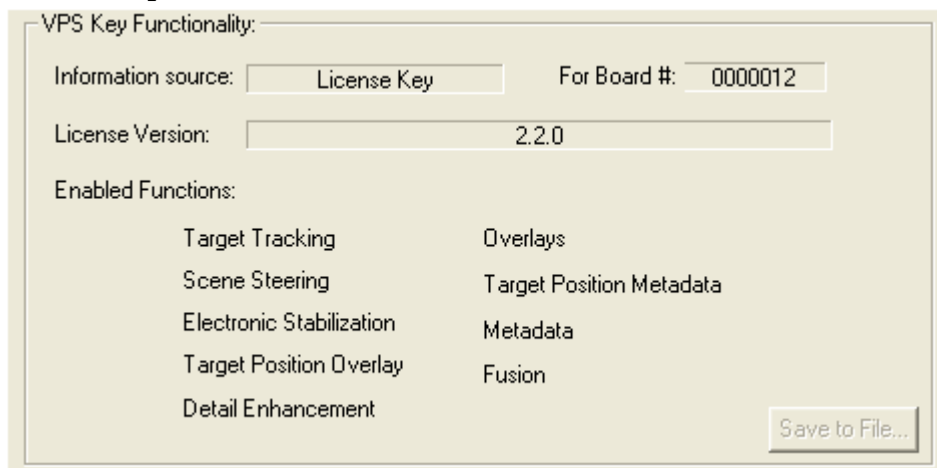


Figure 8 - License Key Loaded

4. To load the key onto the VPS, click the **Send Key** button. If the **Send Key** button is not enabled, it is because of one of the following reasons:
 - The license key file is for a VPS with a different serial number.
 - The firmware currently running on the VPS has a later version than the version in the key.