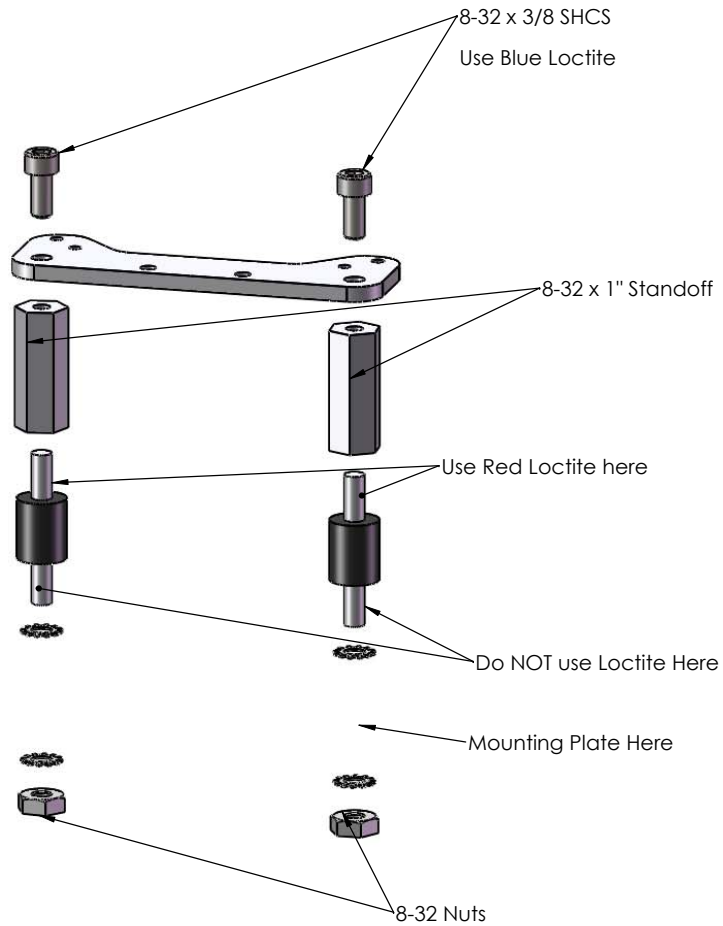
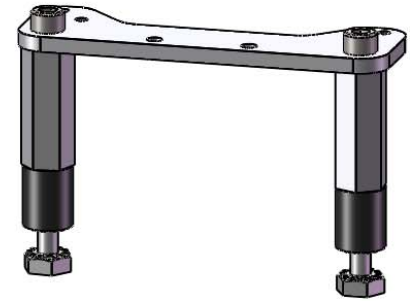


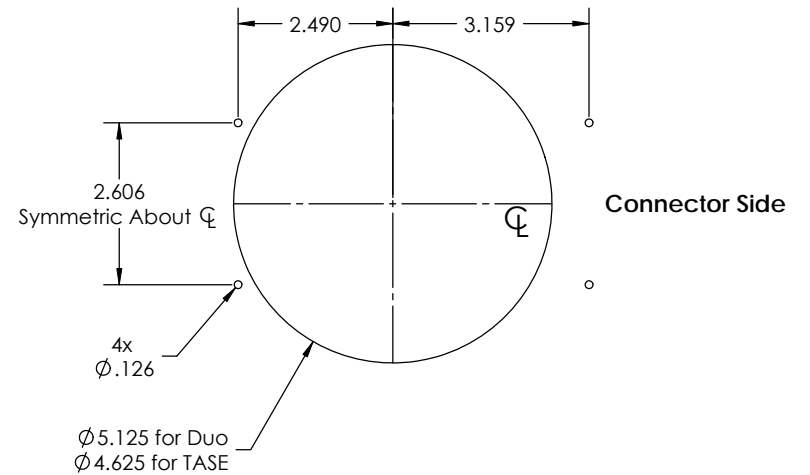
DWG. REV.	DATE	DESCRIPTION
8-03	11/19/2008	M2 x 6 assembly screws note added
8-02	11/19/2008	

Preferred configuration: the inclusion of standoffs locates the soft mounts near the gimbal's center of gravity and protects the motors.



Panel Cutout:

Dimensions in inches



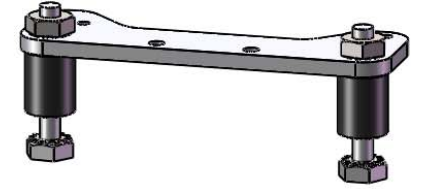
UNLESS OTHERWISE SPECIFIED:
 DIMENSIONS ARE IN MILLIMETERS
 TOLERANCES: ANGULAR = $\pm 0^{\circ}30'$
 DECIMAL: X = ± 0.5
 .X = ± 0.1
 .XX = ± 0.05

Cloud Cap
 TECHNOLOGY
 HOOD RIVER, OR 97031 (541) 387-2120
 DRAWN BY: jbert1.gilchr 8/14/2008
 MATERIAL: per part
 FINISH: per part

DESCRIPTION: TASE150 Soft Mount Bracket Assem		SIZE	PART #	PART REV.
		B	800-01686-00	B-01
WEIGHT: ~24.5	SCALE: 1:2	SHEET 1 OF 3		

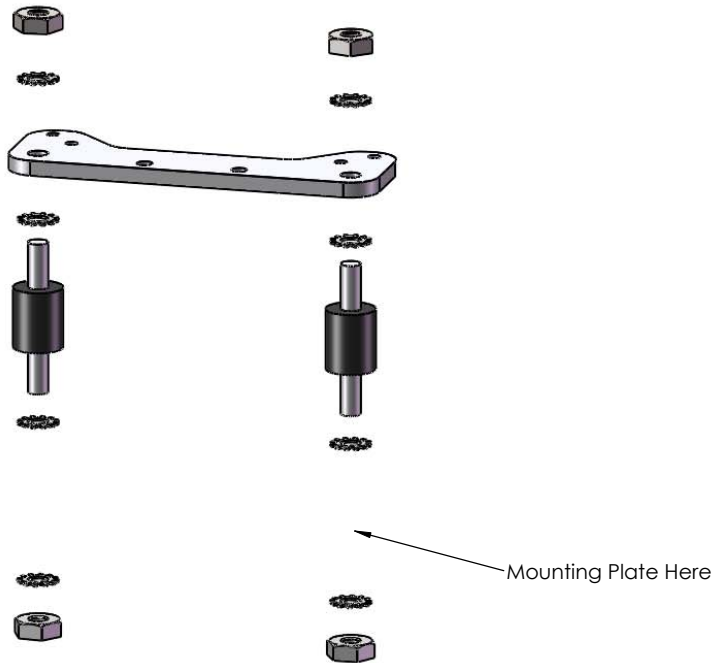
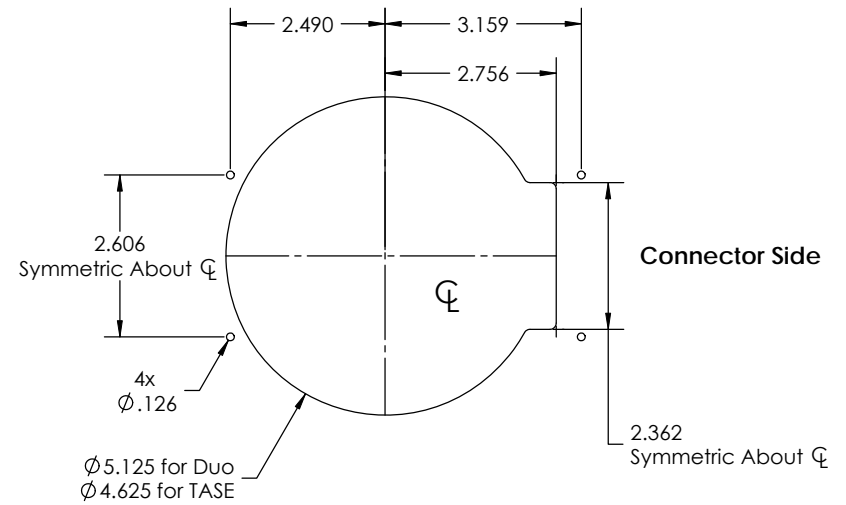
Backup configuration: remove the standoffs if there is not enough room in the installation.

Do NOT use Loctite in this configuration. Make sure star washers keep rubber mounts from spinning so that the nuts can be torqued on sufficiently.



Panel Cutout:

Dimensions in inches



UNLESS OTHERWISE SPECIFIED:
 DIMENSIONS ARE IN MILLIMETERS
 TOLERANCES: ANGULAR = $\pm 0.30^\circ$
 DECIMAL: X = ± 0.5
 .X = ± 0.1
 .XX = ± 0.05

PROPRIETARY AND CONFIDENTIAL
 THE INFORMATION CONTAINED IN THIS
 DRAWING IS THE SOLE PROPERTY OF
 CLOUD GAP TECHNOLOGY, INC. ANY
 REPRODUCTION IN PART OR AS A WHOLE
 WITHOUT THE WRITTEN PERMISSION OF
 THE ABOVE IS PROHIBITED.



HOOD RIVER, OR 97031 (541) 387-2120
 DRAWN BY: robert.t.gilchrist 8/14/2008
 MATERIAL: st per part
 FINISH: per part

DESCRIPTION:
 TASE® Soft Mount Bracket
 Assem

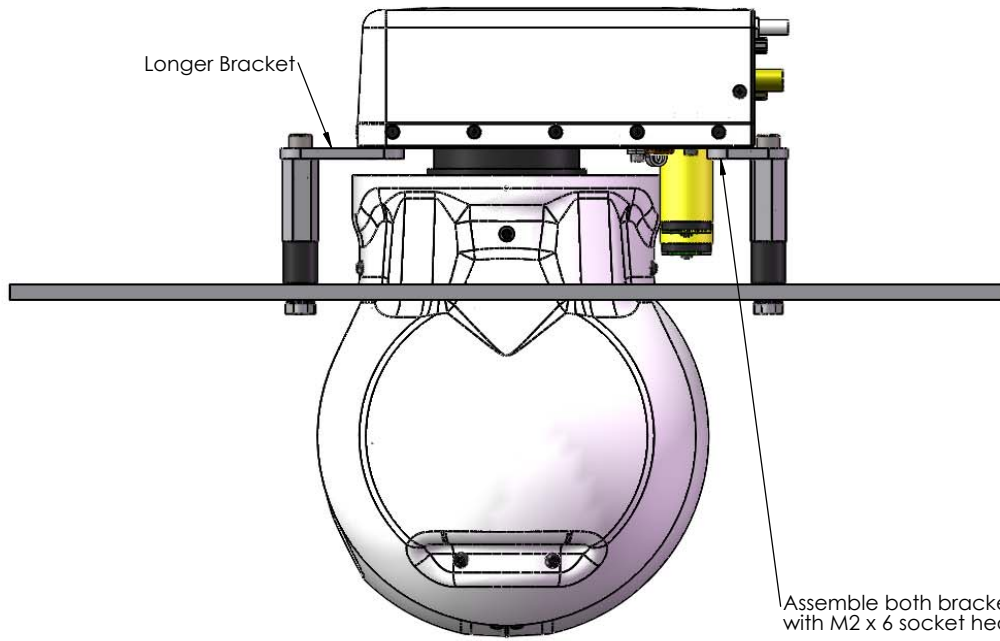
SIZE PART #
B 800-01686-00

PART REV.
 B-01

WEIGHT: ~24.5 SCALE: 1:2 SHEET 2 OF 3

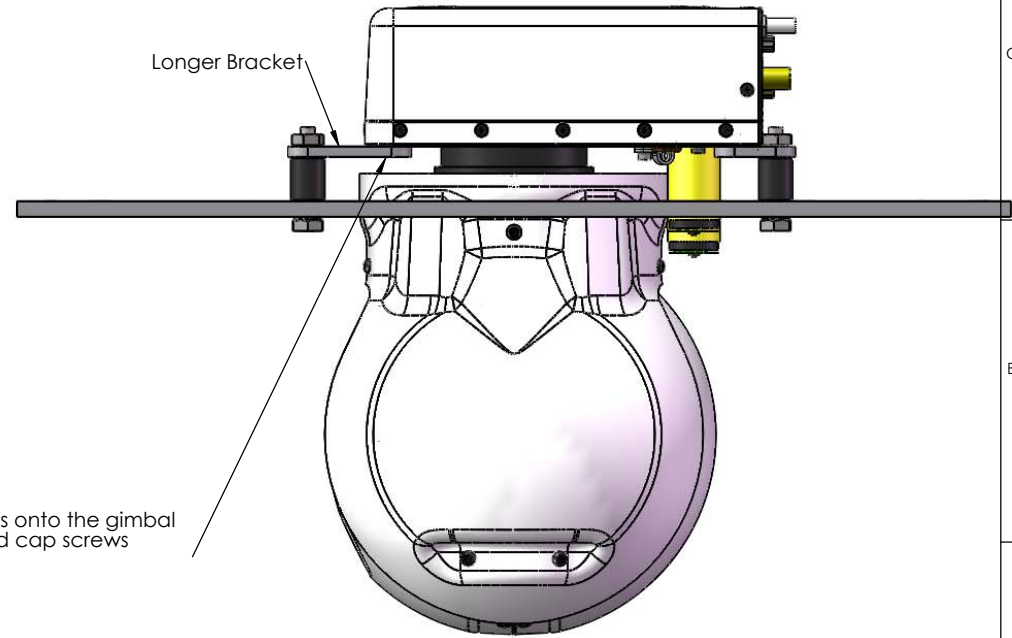
With Standoffs:

Longer Bracket



Without Standoffs:

Longer Bracket



Assemble both brackets onto the gimbal with M2 x 6 socket head cap screws

UNLESS OTHERWISE SPECIFIED:
DIMENSIONS ARE IN MILLIMETERS
TOLERANCES: ANGULAR = $\pm 0^{\circ}30'$
DECIMAL: X = ± 0.5
 .X = ± 0.1
 .XX = ± 0.05

PROPRIETARY AND CONFIDENTIAL
THE INFORMATION CONTAINED IN THIS
DRAWING IS THE SOLE PROPERTY OF
CLOUD CAP TECHNOLOGY, INC. ANY
REPRODUCTION IN PART OR AS A WHOLE
WITHOUT THE WRITTEN PERMISSION OF
THE ABOVE IS PROHIBITED.



HOOD RIVER, OR 97031 (541) 387-2120

DRAWN BY: robert.t.gilchrist 8/14/2008

MATERIAL:
st

FINISH:

DESCRIPTION:

SIZE PART #

B

WEIGHT: ~2268.0

SCALE: 1:1.5 SHEET 3 OF 3

PART REV.